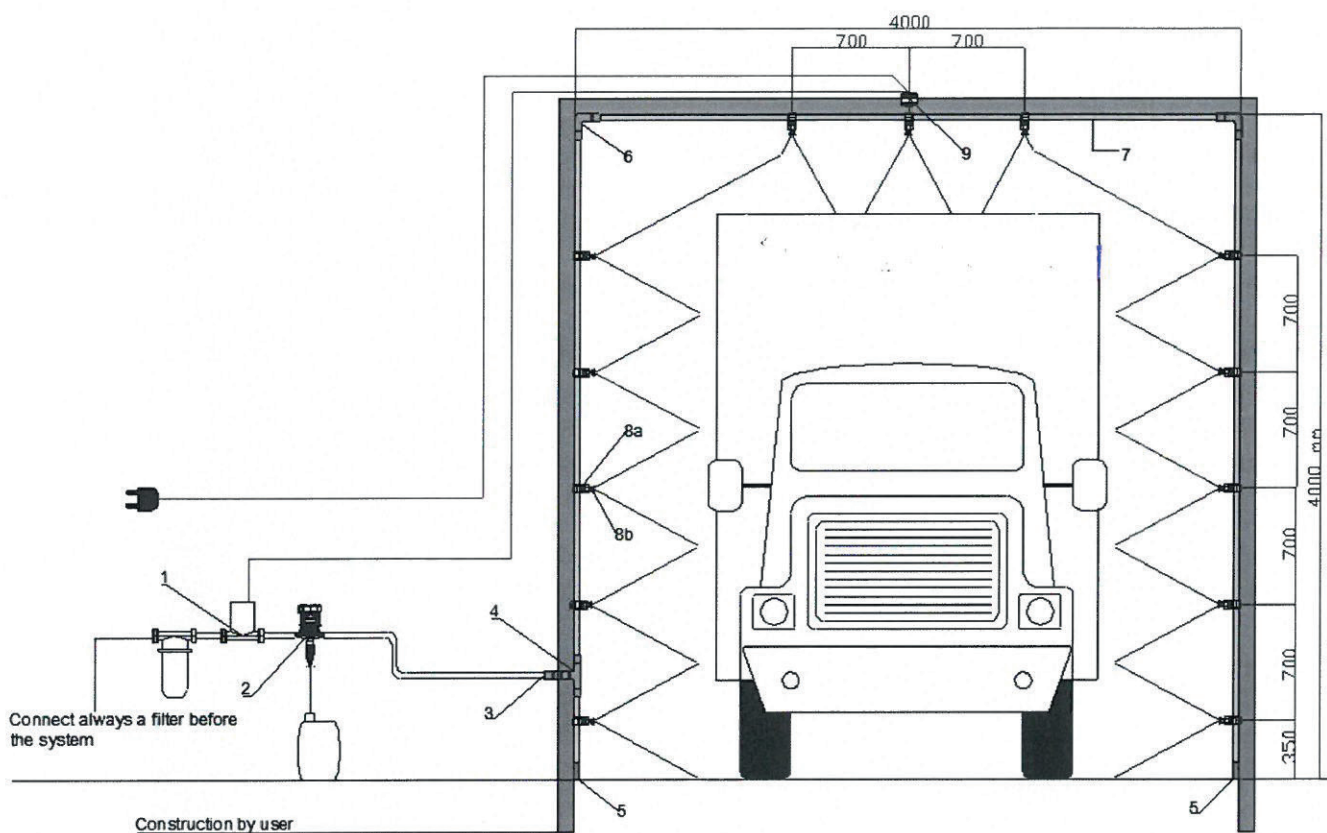


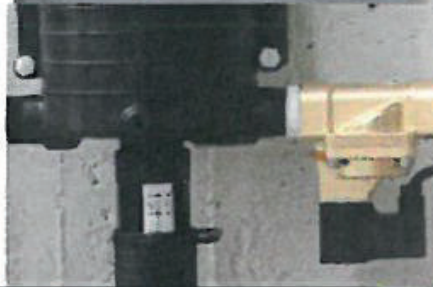
ONTSMETTINGSBRUG MANUAL





Place a solid construction where the shower kit can be connected to

1



Mount the solenoid valve to the pump and connect a electric cable to the sensor and to an electrical network

2



Place the sensor and adjust the angle and time signal (follow the instruction from the sensor in the box)

3



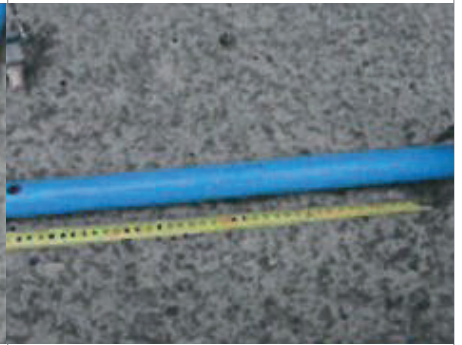
Place the pump to the wall. Make sure that the pump is placed correctly. the waterline should follow the arrow on the pump. Adjust the chemical dosing by turning the sleeve of the Supernova dosing pump.

4



Drill a hole in the pipe 350 mm from the ground with a Ø 13 mm drill.

5



Drill a hole every 700 mm from the first hole.

6



Place the eyelet with adjustable nozzles on the pipes and place them in the right angle to cover the complete vehicle

7



Place the pipes with both blind caps, ellbows, t-adapter + inlet adapter

8



Place the shower to the solid construction and connect the shower with the dosing pump with a hose or pipe

9



Connect the sensor to the electric network and adjust the time level of the sensor.

10

